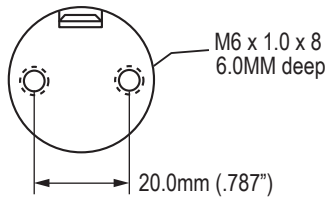
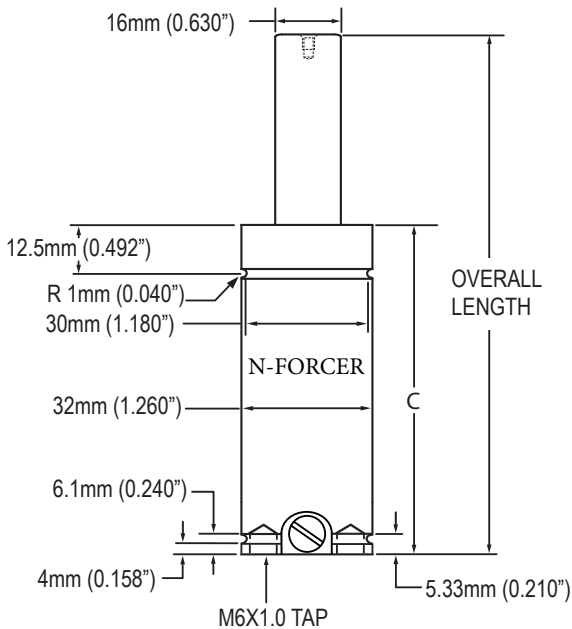




NHP400 TAPPED BASE STYLE

Specify "TB" when ordering



NHP400 SERIES

Our NHP400 offers a greater force in a smaller envelope than previous 32mm (1.260") cylinders yet still contains steel rod bearing supports and offers multiple mounting options.

Self contained or hoses systems. Our NHP400 can be used in hoses applications using the M6 threaded side port. Order using "no valve" option for hoses systems.

We always recommend that all cylinders be backed-up during operation.

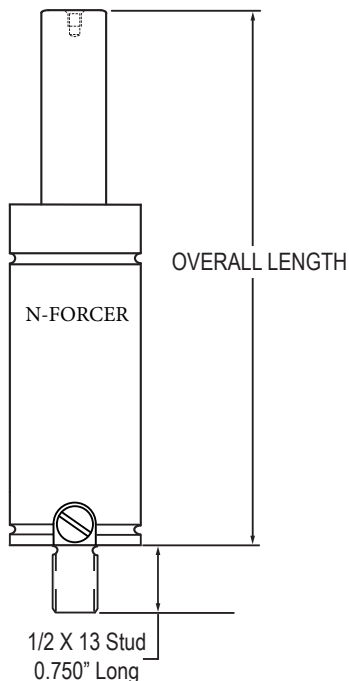
NHP400 STROKE CHART

STROKE LENGTH		MAX.ALLOW. STROKE		C		OVERALL LENGTH		WEIGHT
MM	INCHES	MM	INS.	MM +/-5	INS +/-02	MM +/-5	INS +/-02	LBS.
10.0	0.394	8.5	0.334	40.0	1.544	50.0	1.937	0.22
12.5	0.492	11.0	0.432	42.5	1.621	54.0	2.113	0.25
15.0	0.591	13.5	0.531	45.0	1.741	60.0	2.331	0.28
19.0	0.748	17.5	0.688	49.0	1.898	68.0	2.650	0.33
25.0	0.984	23.5	0.924	55.0	2.156	80.0	3.140	0.40
32.0	1.260	30.5	1.200	62.0	2.410	94.0	3.660	0.48
37.5	1.476	36.0	1.416	67.5	2.626	104.0	4.102	0.55
50.0	1.969	48.5	1.909	80.0	3.119	130.0	5.087	0.70
62.5	2.461	61.0	2.401	92.5	3.611	155.0	6.071	0.85
75.0	2.953	73.5	2.893	105.0	4.103	180.0	7.055	0.90
80.0	3.150	78.5	3.090	110.0	4.300	190.0	7.450	0.96
100.0	3.937	98.5	3.877	130.0	5.087	230.0	9.024	1.20
125.0	4.921	123.5	4.861	155.0	6.071	280.0	10.990	1.35

Recommended tolerance on Machined Pocket in the die is 34.0/36.0mm (1.338"/1.417") for maximum NHP400 performance.

NHP400 STUD MOUNT STYLE

Specify "STUD" when ordering



ORDERING CODE:

NHP400 X STROKE LENGTH - MOUNT STYLE - CHARGE PRESSURE

For hoses systems requiring no valve, request "no valve" as charge pressure.

STROKE		TRAVEL												
	MM	10.0	12.5	15.0	19.0	25.0	32.0	37.5	50.0	62.5	75.0	80.0	100.0	125.0
MM	INCHES	0.394	0.492	0.591	0.748	0.984	1.260	1.476	1.969	2.461	2.953	3.150	3.937	4.921
10.0	0.394	1042												
12.5	0.492	1042	1059											
15.0	0.591	998	1059	1129										
19.0	0.748	954	999	1047	1136									
25.0	0.984	917	948	982	1040	1143								
32.0	1.260	892	916	940	982	1052	1148							
37.5	1.476	880	899	919	953	1009	1084	1150						
50.0	1.969	862	876	890	914	952	1001	1044	1154					
62.5	2.461	851	862	873	892	921	957	988	1066	1157				
75.0	2.953	844	853	862	877	901	930	954	1013	1084	1158			
80.0	3.150	842	850	859	873	895	921	943	998	1059	1129	1159		
100.0	3.937	836	842	849	860	877	897	914	954	999	1047	1068	1160	
125.0	4.921	831	836	841	850	863	878	891	922	955	990	1005	1069	1162

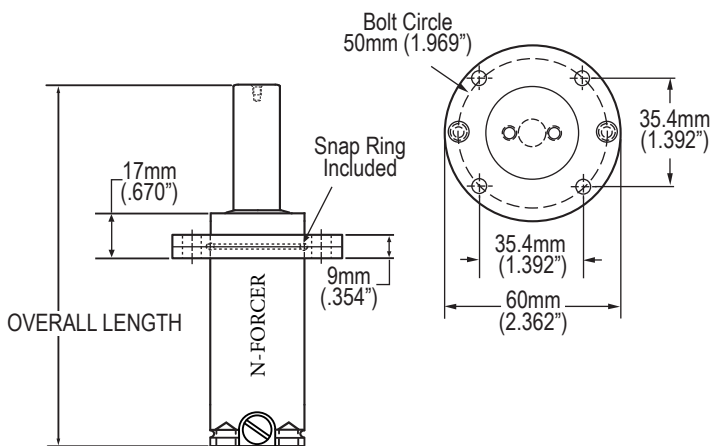
Formula to calculate charge pressure for ANY contact pressure is: FORCE REQUIRED x 3.208 = PSI (ex. 500 x 3.663 = 1832 psi charge in cylinder).

Note: English dimensions in black / Metric dimens ons in blue

MOUNT STYLES

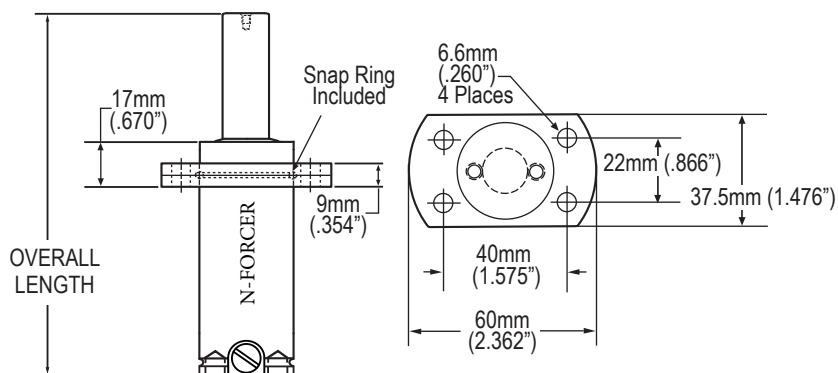
TOP ROUND FLANGE

To order: specify "CH132TR"



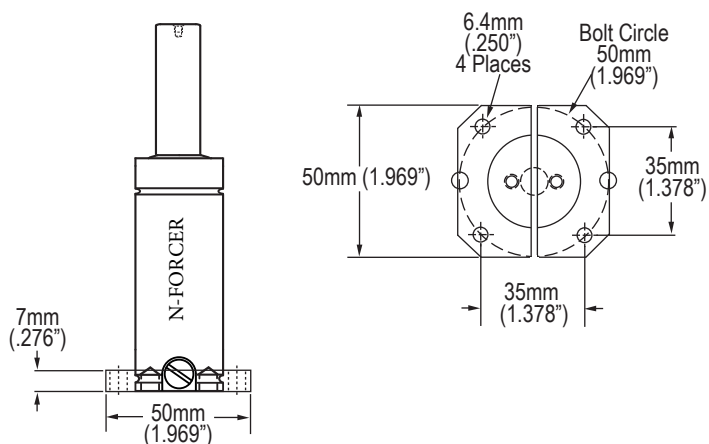
TOP SQUARED OFF FLANGE

To order: specify "CH132TSO"



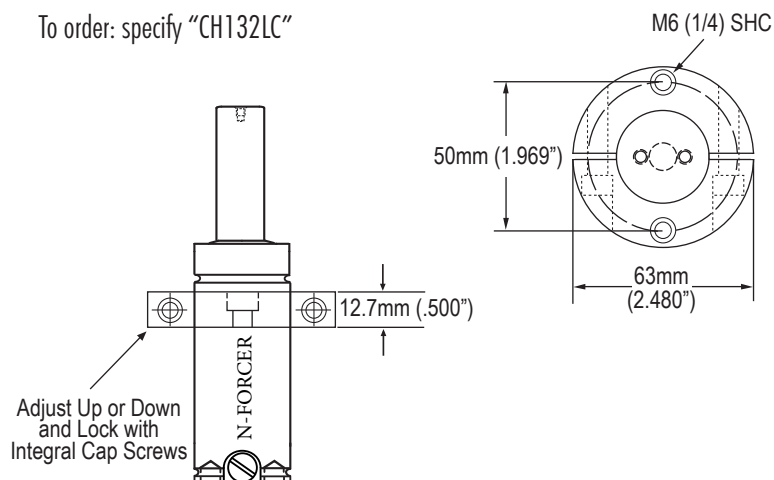
SQUARED BOTTOM FLANGE

To order: specify "CH132SB"



LOCKING COLLAR

To order: specify "CH132LC"

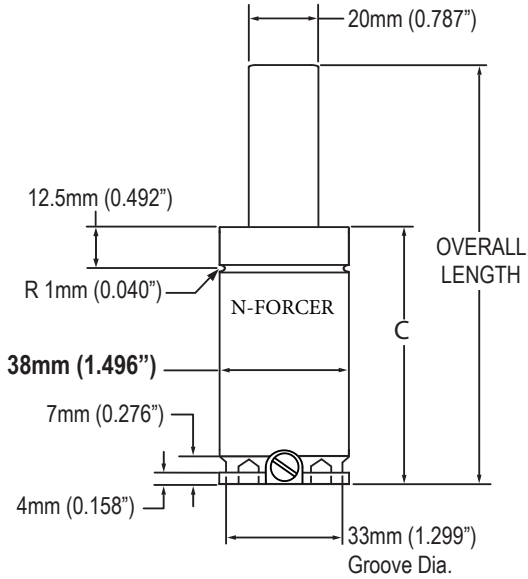


NHP500 SERIES



NHP500 TAPPED BASE STYLE

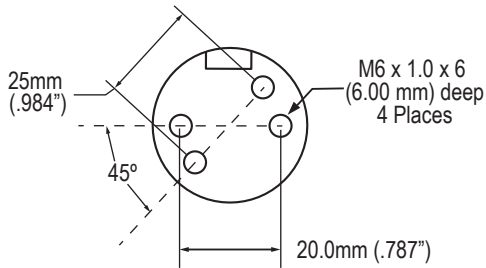
Specify "TB" when ordering



Our NHP500 offers greater force in a smaller envelope than previous 38mm (1.496") cylinders yet still contains a steel rod bearing support and offers multiple mounting options.

Self contained or hoses systems. Our NHP500 can be used in hoses applications using the M6 threaded side port. Order using "no valve" option for hoses systems.

We recommend that all cylinders be backed-up during operation.



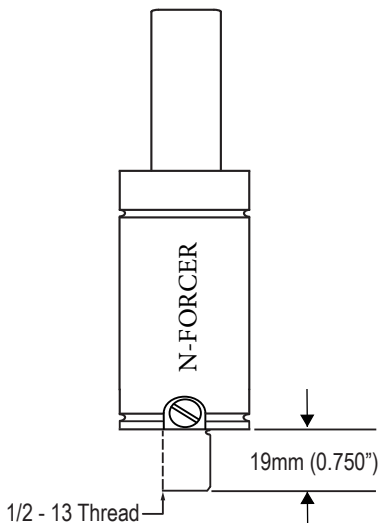
NHP500 STROKE CHART

STROKE LENGTH		MAX.ALLOW. STROKE		C		OVERALL LENGTH		WEIGHT
MM	INCHES	MM	INS.	MM +/- .5	INS +/- .02	MM +/- .5	INS +/- .02	LBS.
10.0	0.394	8.5	0.334	40.0	1.575	50.0	1.968	0.25
13.0	0.492	11.0	0.432	42.5	1.673	55.0	2.165	0.28
15.0	0.591	13.5	0.531	45.0	1.772	60.0	2.362	0.31
19.0	0.748	17.5	0.688	49.0	1.929	68.0	2.677	0.36
25.0	0.984	23.5	0.924	55.0	2.165	80.0	3.150	0.43
32.0	1.260	30.5	1.200	62.0	2.441	94.0	3.701	0.51
38.0	1.476	36.0	1.416	67.5	2.657	105.0	4.134	0.58
50.0	1.969	48.5	1.909	80.0	3.150	130.0	5.118	0.73
63.0	2.461	61.0	2.401	92.5	3.642	155.0	6.102	0.88
75.0	2.953	73.5	2.893	105.0	4.134	180.0	7.087	0.93
80.0	3.150	78.5	3.090	110.0	4.331	190.0	7.480	0.99
100.0	3.937	98.5	3.877	130.0	5.118	230.0	9.055	1.23
125.0	4.921	123.5	4.861	155.0	6.102	280.0	11.024	1.38

Recommended Tolerance on the Machined Pocket in the die is 40.0/42.0mm (1.575"/1.653") for maximum HP500 performance.

NHP500 STUD MOUNT STYLE

Specify "STUD" when ordering



ORDERING CODE: NHP500 X STROKE LENGTH - MOUNT STYLE - CHARGE PRESSURE

For hoses systems requiring no valve, request "no valve" as charge pressure.

NHP 500 SERIES -MOUNT STYLES-



NHP500 FORCE CHART based on 2,175 PSI

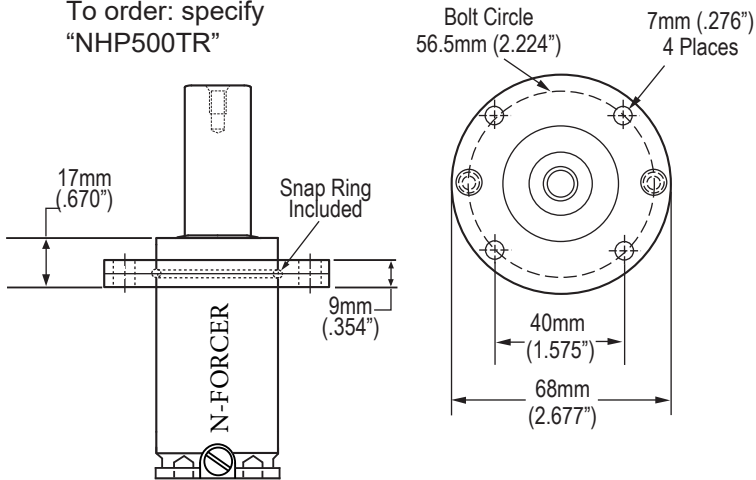
Stroke		Initial Contact Force		Force at Full Stroke	
MM	INS.	LBS	DaN	LBS	DaN
10.0	0.394	1061	472	1499	667
13.0	0.492			1529	680
15.0	0.591			1552	690
19.0	0.748			1578	702
25.0	0.984			1604	713
32.0	1.260			1624	722
38.0	1.476			1635	727
50.0	1.969			1652	735
63.0	2.461			1662	739
75.0	2.953			1669	742
80.0	3.150			1672	744
100.0	3.937			1678	746
125.0	4.921			1684	749

Formula to calculate charge pressure for ANY contact pressure is: FORCE REQUIRED X 2.050 = PSI

Note: English dimensions in black / Metric dimensions in blue

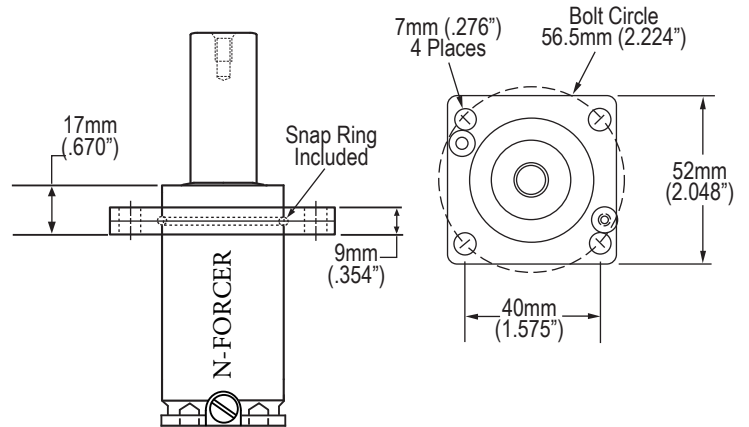
NHP500 TOP ROUND FLANGE

To order: specify "NHP500TR"



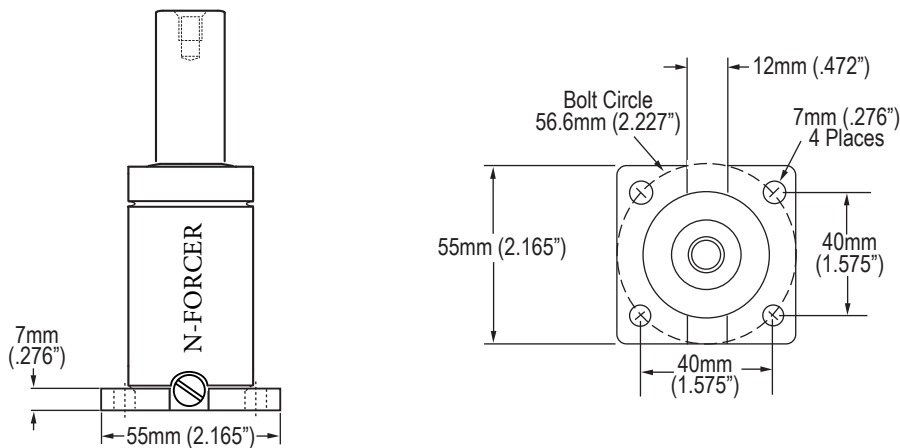
NHP500 TOP SQUARED OFF FLANGE

To order: specify "NHP500TSO"



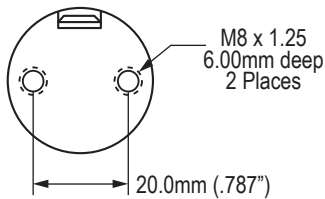
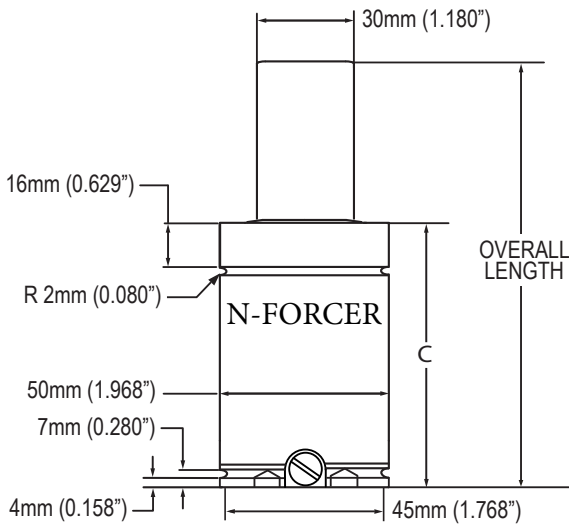
HP500 SQUARED BOTTOM FLANGE

To order: specify "NHP500SB"



NHP1200 TAPPED BASE STYLE

Specify "TB" when ordering



NHP1200 SERIES



Our NHP1200 offers greater force in a smaller envelope than previous 50mm (1.968") cylinders yet still contains a steel rod bearing support and offers multiple mounting options.

Self contained or hoses systems. Our NHP1600 can be used in hoses applications using the M6 threaded side port. Order using "no valve" option for hoses systems.

We recommend that all cylinders be backed-up during operation.

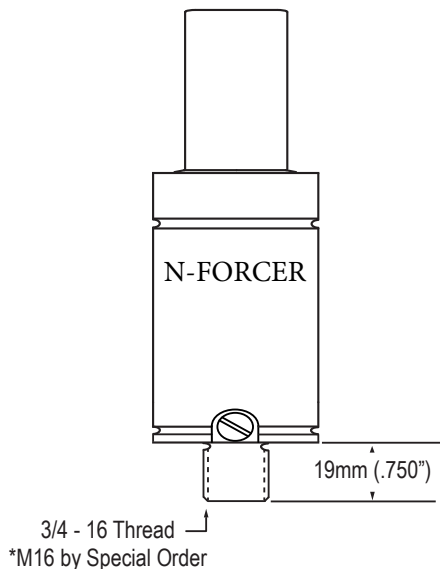
NHP1200 STROKE CHART

STROKE LENGTH		MAX.ALLOW. STROKE		C		OVERALL LENGTH		WEIGHT
MM	INCHES	MM	INCHES	MM +/- .5	INS +/- .02	MM +/- .5	INS +/- .02	LBS.
10.0	0.394	8.5	0.334	46.5	1.830	58.0	2.283	1.25
13.0	0.492	11.0	0.432	49.0	1.928	63.0	2.480	1.28
15.0	0.591	13.5	0.531	51.5	2.027	68.0	2.677	1.31
19.0	0.748	17.5	0.688	55.5	2.184	76.0	2.992	1.36
25.0	0.984	23.5	0.924	61.5	2.420	88.0	3.465	1.43
32.0	1.260	30.5	1.200	68.5	2.696	102.0	4.016	1.51
38.0	1.476	36.0	1.416	74.0	2.912	113.0	4.449	1.58
50.0	1.969	48.5	1.909	86.5	3.405	138.0	5.433	1.73
63.0	2.461	61.0	2.401	99.0	3.897	163.0	6.417	1.88
75.0	2.953	73.5	2.893	111.5	4.389	188.0	7.402	1.93
80.0	3.150	78.5	3.090	116.5	4.586	198.0	7.795	1.99
100.0	3.937	98.5	3.877	136.5	5.373	238.0	9.370	2.23
125.0	4.921	123.5	4.861	161.5	6.357	288.0	11.339	2.38

Recommended tolerance on machined pocket in the die is 52.0/54.0mm (2.047"/2.125") for maximum NHP1200 performance.

NHP1200 STUD MOUNT STYLE

Specify "STUD" when ordering



3/4 - 16 Thread
*M16 by Special Order

ORDERING CODE: NHP1200 X STROKE LENGTH - MOUNT STYLE - CHARGE PRESSURE

HOSED SYSTEM ORDERING CODE: NHP1200 x STROKE LENGTH-MOUNT STYLE- "No Valve"

NHP1200 SERIES

NHP1200 FORCE CHART based on 2,175 PSI

Stroke		Initial Contact Force		Force at Full Stroke	
MM	INS.	LBS	DaN	LBS	DaN
10.0	0.394	2379	1058	3825	1702
13.0	0.492			3902	1736
15.0	0.591			3958	1761
19.0	0.748			4022	1789
25.0	0.984			4084	1817
32.0	1.260			4129	1837
38.0	1.476			4154	1848
50.0	1.969			4192	1865
63.0	2.461			4215	1875
75.0	2.953			4231	1882
80.0	3.150			4236	1884
100.0	3.937			4251	1891
125.0	4.921			4263	1896

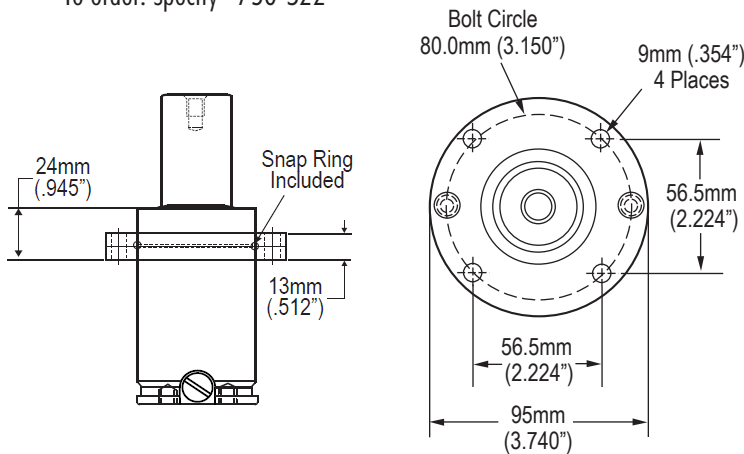
Formula to calculate charge pressure for ANY contact pressure is: FORCE REQUIRED X 0.914 = PSI

Note: English dimensions in black / Metric dimensions in blue

MOUNT STYLES

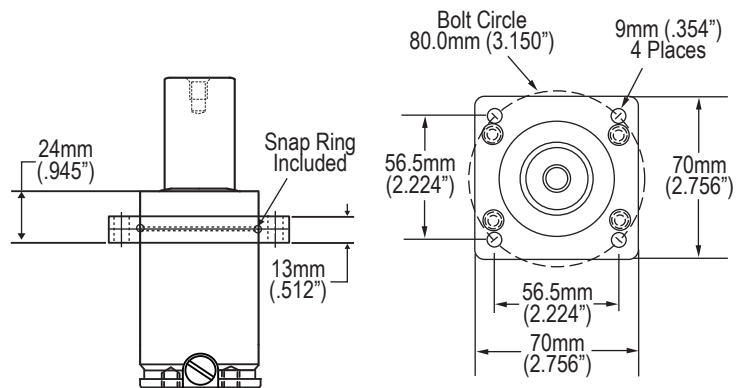
TOP ROUND FLANGE

To order: specify "750-S22"



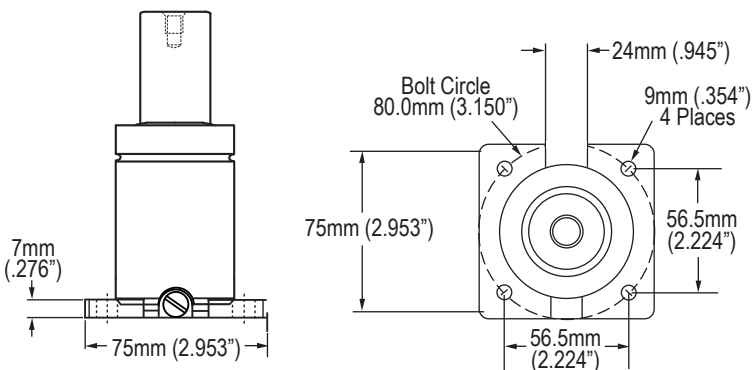
TOP SQUARED FLANGE

To order: specify "750-S78"



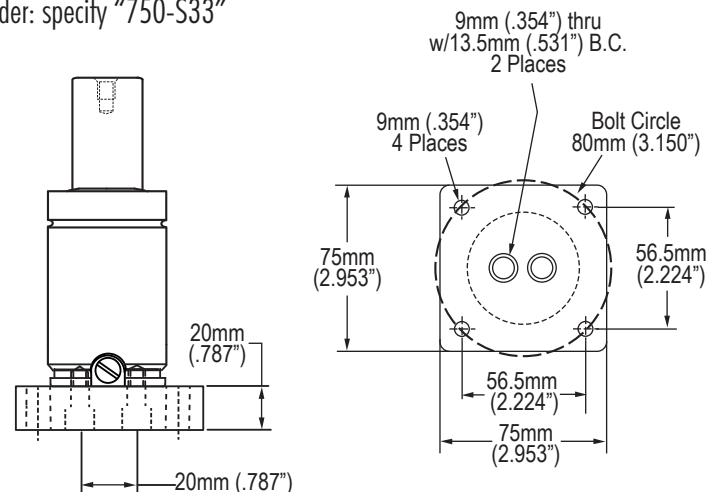
NHP1200 SQUARED BOTTOM FLANGE

To order: specify "NHP1200SB"



MOUNTING PLATE

To order: specify "750-S33"

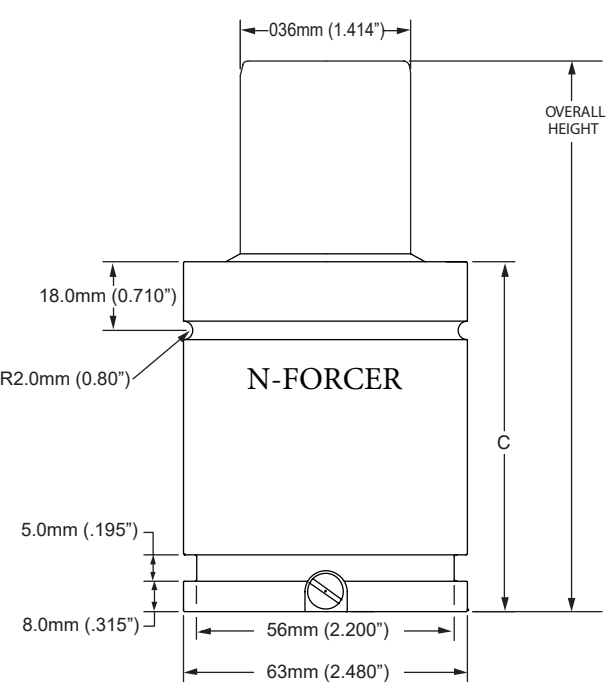




NHP1600 SERIES

NHP1600 STANDARD MOUNT

Specify "STD" when ordering



Our NHP1600 is a 63mm (2.480") cylinder. As an addition to our High Pressure series it offers a low profile with high forces and contains a steel rod bearing support.

Self contained or hoses systems. Our NHP1600 can also be used in hoses applications using the M6 threaded side port. Order using "no valve" option for hoses systems.

We recommend that all cylinders be backed-up during operation.

NHP1600 STROKE CHART

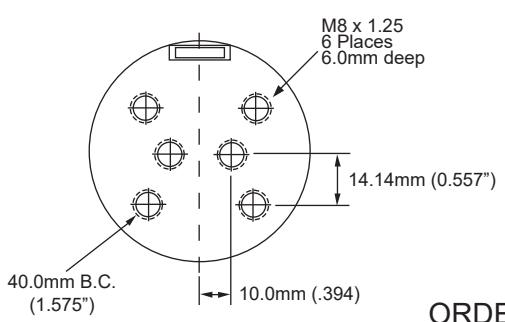
STROKE LENGTH		MAX.ALLOW. STROKE		C		OVERALL LENGTH		WEIGHT
MM	INCHES	MM	INCHES	MM +/- .5	INS +/- .02	MM +/- .5	INS +/- .02	LBS.
10.0	0.394	8.0	0.315	54.0	2.126	64.0	2.520	2.34
13.0	0.492	10.5	0.413	55.5	2.185	69.0	2.717	2.41
15.0	0.591	13.0	0.512	58.0	2.283	74.0	2.913	2.48
16.0	0.630	14.0	0.551	59.0	2.322	76.0	2.992	2.51
19.0	0.748	17.0	0.669	62.0	2.441	82.0	3.228	2.60
25.0	0.984	23.0	0.906	68.0	2.677	94.0	3.700	2.78
32.0	1.260	30.0	1.181	75.0	2.953	108.0	4.252	2.98
38.0	1.476	35.5	1.398	81.0	3.189	119.0	4.685	3.12
50.0	1.969	48.0	1.890	93.0	3.661	144.0	5.670	3.50
63.0	2.461	60.5	2.382	105.5	4.154	169.0	6.654	3.86
75.0	2.953	73.0	2.874	118.0	4.646	194.0	7.638	4.22
80.0	3.150	78.0	3.071	123.0	4.843	204.0	8.031	4.37
100.0	3.937	98.0	3.858	143.0	5.630	244.0	9.606	4.95
125.0	4.921	123.0	4.843	168.0	6.614	294.0	11.575	5.67

Recommended tolerance on machined pocket in the die is 65.0/67.0mm (1519 OaN) for maximum NHP1600 performance.

Please Note: Contact Force @2175 PSI (ISO Bar) : 3415 lbs. (1519 OaN)
 Pressurerised @ full stroke (Depending on stroke length: 46 +/- 5%
 Contact Force (lbs.) desired x 0.637 = PSI charge pressure

NHP1600 TAPPED BASE MOUNT STYLE

Specify "TB" when ordering



ORDERING CODE: NHP1600 X STROKE LENGTH - MOUNT STYLE - CHARGE PRESSURE

For hoses systems requiring no valve, request "no valve" as charge pressure.

WARNING: UNCONTROLLED ACCELEARTION WILL CAUSE CYLINDER DAMAGE.

Note: English dimensions in black / Metric dimensions in blue



NHP1600 SERIES FORCE CHART

NHP1600 FORCE CHART based on 2,175 PSI

Stroke		Initial Contact Force		Force at Full Stroke	
MM	INS.	LBS	DaN	LBS	DaN
10.0	0.394	3415	1519	4826	2146
13.0	0.492			4850	2157
15.0	0.591			4874	2168
16.0	0.630			4898	2178
19.0	0.748			4923	2189
25.0	0.984			4948	2200
32.0	1.260			4973	2212
38.0	1.476			4997	2222
50.0	1.969			5022	2233
63.0	2.461			5048	2245
75.0	2.953			5073	2256
80.0	3.150			5098	2267
100.0	3.937			5124	2279
125.0	4.921			5149	2290

Formula to calculate charge pressure for ANY contact pressure is: FORCE REQUIRED X 0.637 = PSI

Note: English dimensions in black / Metric dimensions in blue

NHP2400 SERIES



N-FORCER is pleased to introduce our High Performance NHP2400 Series nitrogen gas cylinder. This ultra compact, high performance cylinder has the highest forces and shortest profile available in a 75.0mm (2.953") diameter cylinder.

We have incorporated our superior rod bearing support system in the NHP2400. Our steel bearing support is a design feature we have incorporated in all of our high pressure nitrogen cylinder designs, and a feature that allows our customers to realize extended cylinder life and reduced downtime.

Available as self contained or hosed systems. Our NHP1600 can also be used in hosed applications using the M6 threaded side port. For hosed systems, simply add "no valve" to the charging pressure location of your order. See bottom of the page for order information.

As always, we recommend that all cylinders be backed-up during operation.

Please see next page for more details.

NHP2400 STROKE CHART

STROKE LENGTH		MAX.ALLOW. STROKE		C	OVERALL LENGTH		WEIGHT	
MM	INCHES	MM	INCHES		MM+/-0.5	INS+/-0.02		MM+/-0.5
16.0	0.6	14.0	0.551	58.0	2.284	77.0	3.031	3.1
19.0	0.7	17.0	0.669	61.0	2.402	83.0	3.266	3.2
25.0	1.0	23.0	0.906	67.0	2.638	95.0	3.740	3.4
32.0	1.3	30.0	1.181	74.0	2.914	109.0	4.291	3.7
38.0	1.5	36.0	1.417	80.0	3.150	121.0	4.764	3.9
50.0	2.0	48.0	1.890	92.0	3.623	145.0	5.709	4.3
63.0	2.5	61.0	2.402	105.0	4.134	171.0	6.732	4.8
75.0	3.0	73.0	2.874	117.0	4.607	195.0	7.677	5.2
80.0	3.1	78.0	3.071	122.0	4.804	205.0	8.071	5.3
100.0	3.9	98.0	3.858	142.0	5.591	245.0	9.646	6.0
125.0	4.9	123.0	4.843	167.0	6.575	295.0	11.614	6.9

Recommended tolerance on machined pocket in the die is 77.0/79.0 mm (3.03"/3.11") for maximum NHP2400 performance.

SELF-CONTAINED ORDERING CODE: NHP2400 x STROKE LENGTH-MOUNT STYLE-CHARGE PRESSURE
HOSED SYSTEM ORDERING CODE: NHP2400 x STROKE LENGTH-MOUNT STYLE- "No Valve"

NHP2400 SERIES

NHP2400 FORCE CHART based on 2,000 psi Initial contact pressure for the HP2400 is 4920 lbs.



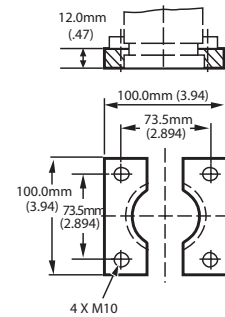
		16.0	19.0	25.0	32.0	38.0	50.0	63.0	75.0	80.0	100.0	125.0
MM	INCHES	0.63	0.75	0.98	1.26	1.50	1.97	2.48	2.95	3.15	3.94	4.92
16.0	0.63	6850										
19.0	0.75	6547	6980									
25.0	0.98	6159	6463	7173								
32.0	1.26	5889	6114	6621	7330							
38.0	1.50	5737	5920	6326	6876	7429						
50.0	1.97	5541	5675	5964	6340	6702	7567					
63.0	2.48	5414	5517	5736	6015	6277	6875	7667				
75.0	2.95	5335	5420	5600	5824	6032	6495	7084	7731			
80.0	3.15	5309	5389	5555	5763	5954	6377	6908	7484	7753		
100.0	3.94	5232	5294	5424	5584	5728	6041	6421	6817	6997	7821	
125.0	4.92	5170	5219	5321	5444	5555	5791	6069	6351	6477	7033	7878

Formula to calculate charge pressure for lower initial contact pressure is: FORCE REQUIRED X .406 (ex. 3500 x .406 = 1421 psi charge in cylinder).
PLEASE NOTE: A max. charge pressure of 2175 PSI/150 Bar is available upon request. Initial contact force at 2175 PSI/150 bar will be 5353 lbs (2381 daN).

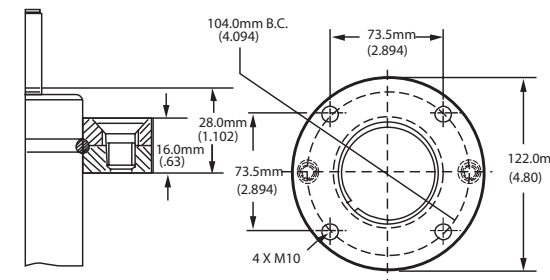
Additional Mount Styles Available for the NHP2400:



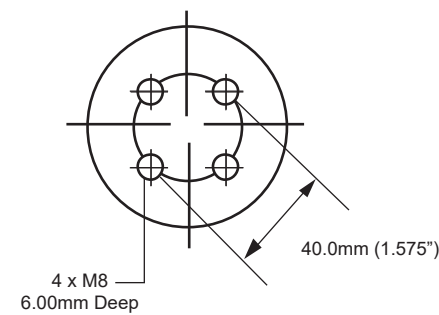
S16
To order: Specify "S16"



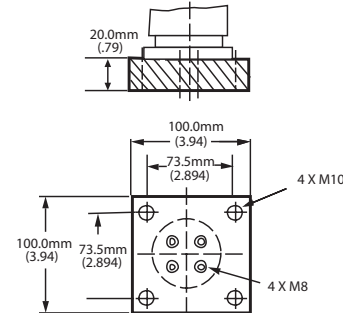
S22
To order: Specify "S22"



TAPPED BASE MOUNT STYLE
Specify "MTB2" when ordering



S33
To order: Specify "S33"



S78
To order: Specify "S78"

